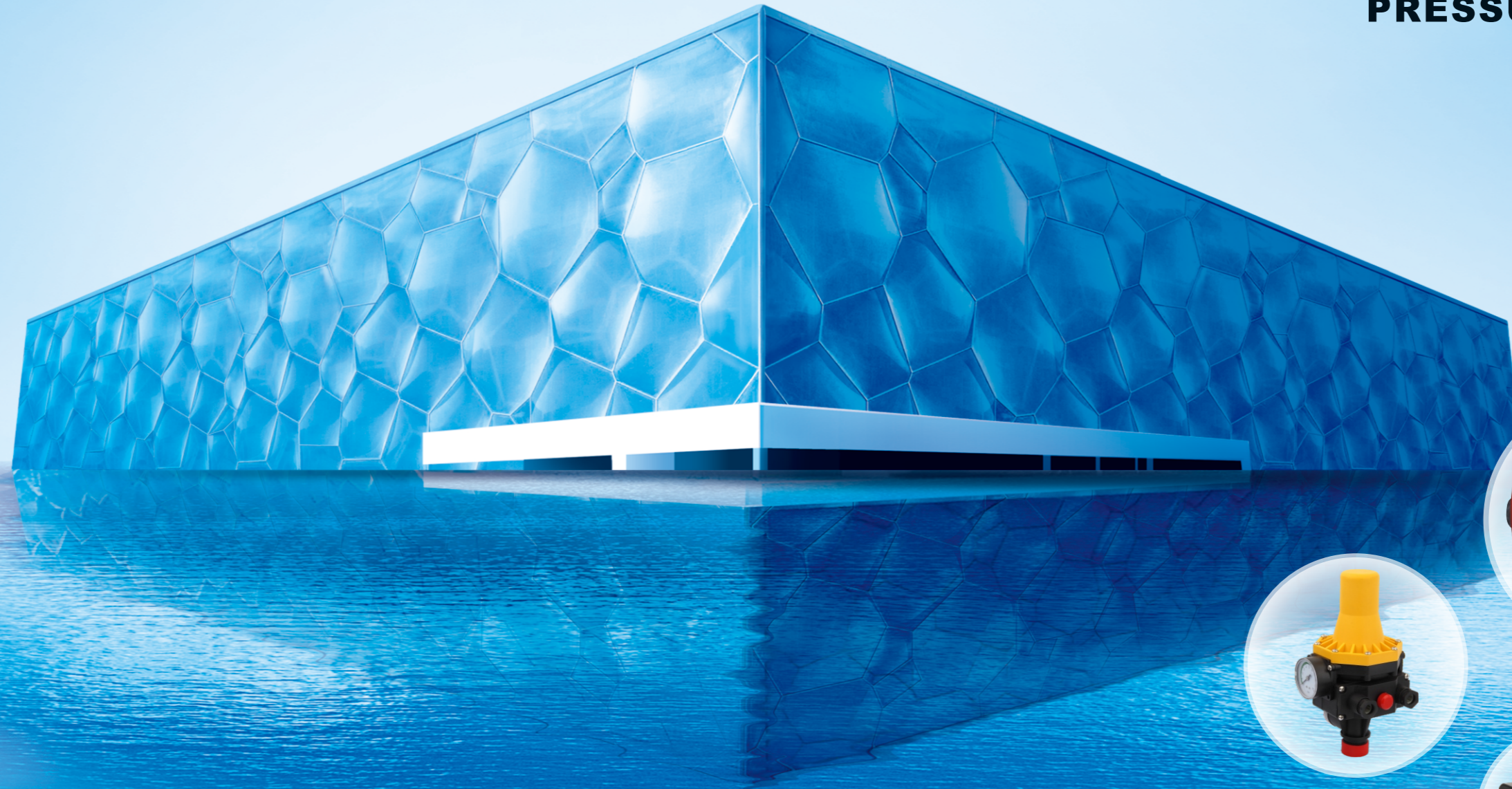




LIYUTM
PRESSURE TANK



LIYUTM
PRESSURE TANK

WENLING LIYU MACHINE CO.,LTD

Add:Central Industrial Zone,Chengnan Town,Wenling City,Zhejiang Province,China
Tel:0086-576-86208967 Mobile:0086-18606766366,0086-13867672070
E-mail:pressuretank@163.com, allen_zhongma@163.com
Skype:allenwu20100603 www.liyu-machine.com

**WENLING LIYU
MACHINE CO.,LTD**

COMPANY Introduction

Wenling Liyu Machine co.,ltd is a leading professional manufacturer for research, development, production and sales of pressure tank, electronic pressure controller, mechanical pressure switch, float switch and accessories for water pump, such as pressure gauge,brass connector, flexiblbe hose,etc.

Our products are very popular in European, South-American market, Middle East and enjoy good reputation by the customers for our constant excellent quality, innovation and service.

The company is located in China's largest production base of pumps ,Wenling City , Zhejiang Province. It just take 30minutes from the company to TAIZHOU AIRPORT, and 20minutes from company to WENLING RAILWAY STATION, the traffic is convenient and the environment is comfortable . We sincerely hope to develop together with all friends , Welcome new and old clients at home and abroad to visit our factory and do business with us .



Specification

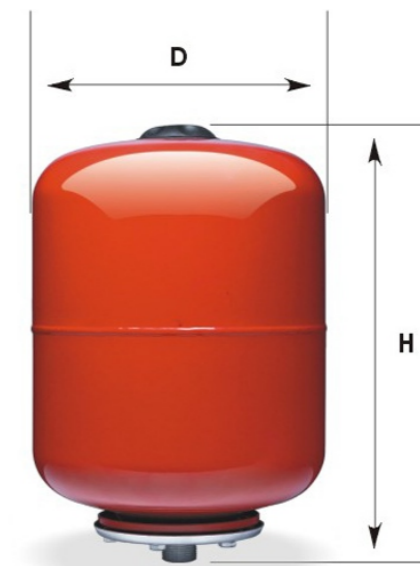
MAX. Work pressure:3.5bar
Working temperature
Epdm: -10°C/99°C
Natural rubber:0°C/77°C
Precharge:1.5Bar



型号 Model	最大工作压力 MAX. Pressure (bar)	直径 Diameter (mm)	高度 Height (mm)	接口 Connector	预冲压力 Precharge Pressure(bar)	包装 Packing (cbm)
VT-2L	3.5	106/116	195	1/2 "	1.5	0.05203/20PCS

Specification

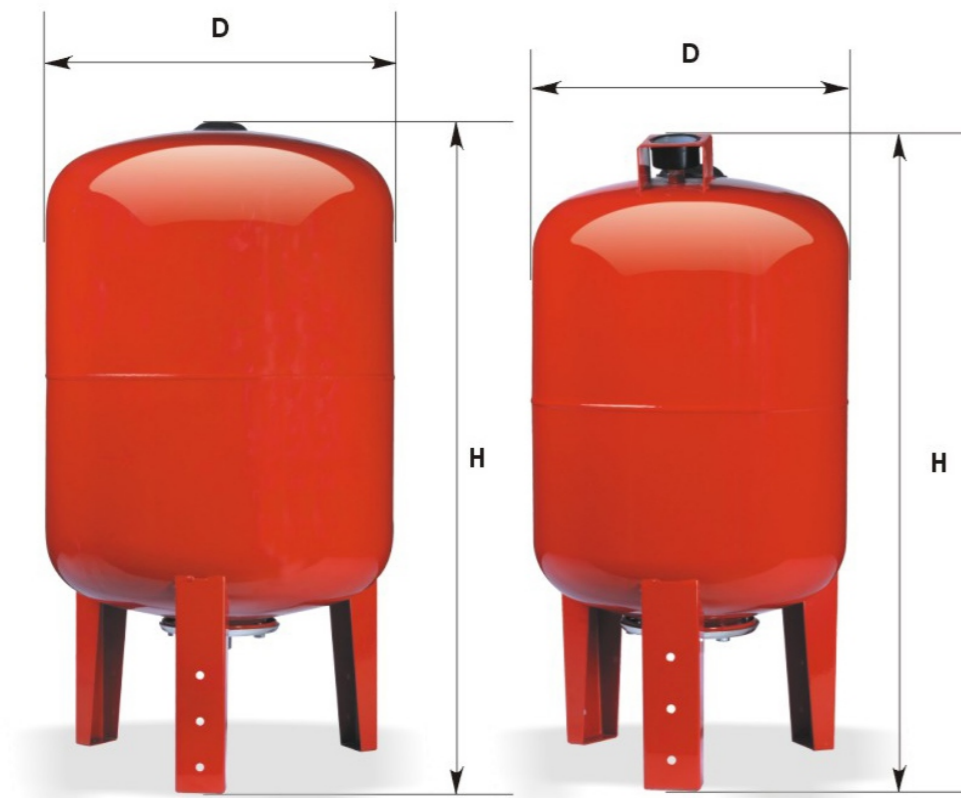
Replaceable membrane pressure tanks
Carbon steel
Working temperature
Butyl: -20°C/99°C
Epdm:-20°C/99°C
Natural rubber:0°C/77°C



型号 Model	最大工作压力 MAX. Pressure (bar)	直径 Diameter (mm)	高度 Height (mm)	接口 Connector	预冲压力 Precharge Pressure(bar)	包装 Packing (cbm)
VT-5L	6,8,10	170	275	1 "	1.5	0.00875
VT-8L	6,8,10	200	325	1 "	1.5	0.01400
VT-12L	6,8,10	270	305	1 "	1.5	0.02333
VT-19L	6,8,10	270	395	1 "	1.5	0.03214
VT-24L	6,8,10	270	460	1 "	1.5	0.03606

Specification

Replaceable membrane pressure tanks
Carbon steel
Working temperature
Butyl: -20°C/99°C
Epdm: -20°C/99°C
Natural rubber: 0°C/77°C

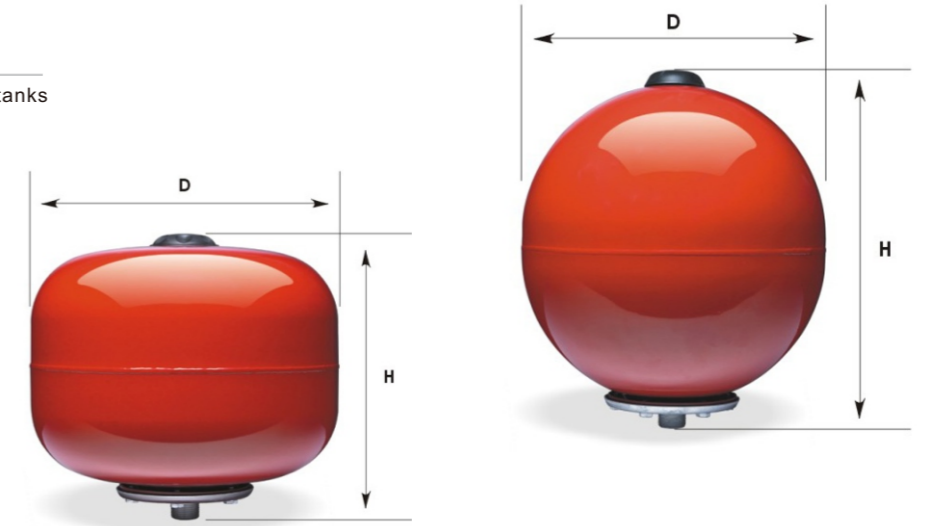


With gauge

型号 Model	最大工作压力 MAX. Pressure (bar)	直径 Diameter (mm)	高度 Height (mm)	接口 Connector	预冲压力 Precharge Pressure(bar)	包装 Packing (cbm)
VT-36L	6, 8, 10	350	550	1"	1.5	0.06738
VT-50L	6, 8, 10	350	660	1"	1.5	0.0833
VT-60L	6, 8, 10	380	785	1"	1.5	0.13163
VT-80L	6, 8, 10	450	725	1"	1.5	0.1539
VT-100L	6, 8, 10	450	810	1"	1.5	0.1701

Specification

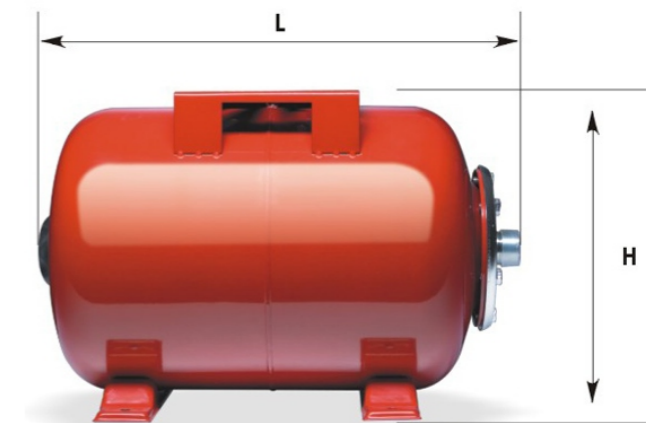
Replaceable membrane pressure tanks
Carbon steel
Working temperature
Butyl: -20°C/99°C
Epdm: -20°C/99°C
Natural rubber: 0°C/77°C



型号 Model	最大工作压力 MAX. Pressure (bar)	直径 Diameter (mm)	高度 Height (mm)	接口 Connector	预冲压力 Precharge Pressure(bar)	包装 Packing (cbm)
FT-24L	6, 8	350	350	1"	1.5	0.03945
RT-25L	6, 8	350	390	1"	1.5	0.04474

Specification

Replaceable membrane pressure tanks
Carbon steel
Working temperature
Butyl: -20°C/99°C
Epdm: -20°C/99°C
Natural rubber: 0°C/77°C



型号 Model	最大工作压力 MAX. Pressure (bar)	长度 Length (mm)	高度 Height (mm)	接口 Connector	预冲压力 Precharge Pressure(bar)	包装 Packing (cbm)
HT-19L	6, 8, 10	395	292	1"	1.5	0.03559
HT-24L	6, 8, 10	460	292	1"	1.5	0.03993
HT-36L	6, 8, 10	435	375	1"	1.5	0.05882
HT-50L	6, 8, 10	545	375	1"	1.5	0.07524
HT-80L	6, 8, 10	600	470	1"	1.5	0.13248
HT-100L	6, 8, 10	685	470	1"	1.5	0.15235

Specification

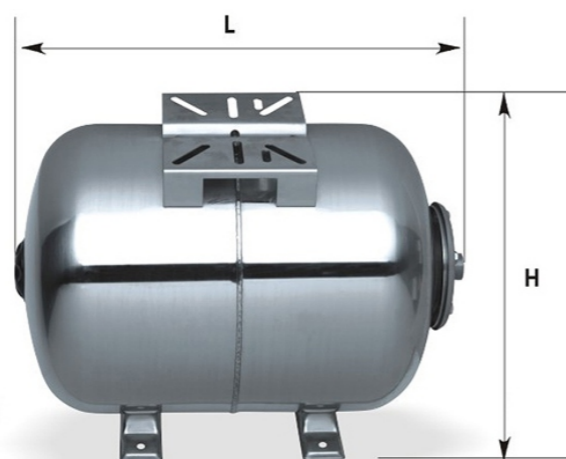
Replaceable membrane pressure tanks
Carbon steel
Working temperature
Butyl: -20°C/99°C
Epdm: -20°C/99°C
Natural rubber: 0°C/77°C



型号 Model	最大工作压力 MAX. Pressure (bar)	直径 Diameter (mm)	高度 Height (mm)	接口 Connector	预冲压力 Precharge Pressure(bar)	包装 Packing (cbm)
CFT-24L	6, 8, 10	350	350	1"	1.5	0.03945
CHT-24L	6, 8, 10	270	292	1"	1.5	0.03393

Specification

Replaceable membrane pressure tanks
Carbon steel
Working temperature
Butyl: -20°C/99°C
Epdm: -20°C/99°C
Natural rubber: 0°C/77°C



型号 Model	最大工作压力 MAX. Pressure (bar)	长度 Length (mm)	高度 Height (mm)	接口 Connector	预冲压力 Precharge Pressure(bar)	包装 Packing (cbm)
SHT-24L	6, 8, 10	460	292	1"	1.5	0.03993
SHT-50L	6, 8, 10	545	375	1"	1.5	0.07524

Specification

Carbon steel
Working temperature
Epdm: 0-99°C



型号 Model	最大工作压力 MAX. Pressure (bar)	直径 Diameter (mm)	高度 Height (mm)	接口 Connector	预冲压力 Precharge Pressure(bar)	包装 Packing (cbm)
DT-8L	6, 8, 10, 16	200	300	1"	1.8-2.0	0.01400
DT-19L	6, 8, 10, 16	270	370	1"	1.8-2.0	0.02979
DT-24L	6, 8, 10, 16	270	420	1"	1.8-2.0	0.03371

Specification

型号 Model	材质 MATERIAL	工作温度 working temperature	最大工作压力 MAX. Pressure (bar)	型号 Model	材质 MATERIAL	工作温度 working temperature	最大工作压力 MAX. Pressure (bar)
NRM-24L	NATURAL RUBBER	0-77°C	6	NRM-100L	NATURAL RUBBER	0-77°C	6
ERM-24L	EPDM	-20-99°C	8	ERM-100L	EPDM	-20-99°C	8
BRM-24L	BUTYL	-20-99°C	10	BRM-100L	BUTYL	-20-99°C	10

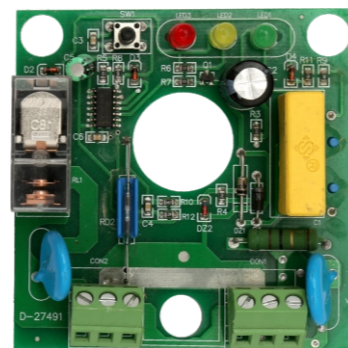
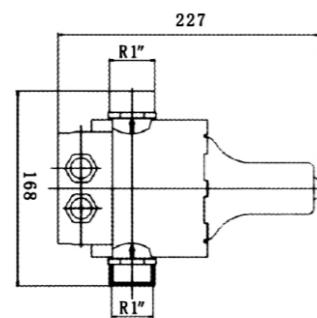
EPC-10



EPC-10

Technical Parameters

Singel voltage input	220V-240V 110V-120V
Frequency	50/60HZ
Max. current	10A
Max. power	1.1 KW, 1.5KW
Starting pressure setting	1.2bar, 1.5bar, 2.2bar
Max. working pressure	10bar
Connection thread	R1"
Protection rating	IP65
Flow at dry running	30-60L/h
Max. working temperature	60°C
Wiring requirement	Cable diameter 7.5-9mm
Approval	TUV Rheinland CE



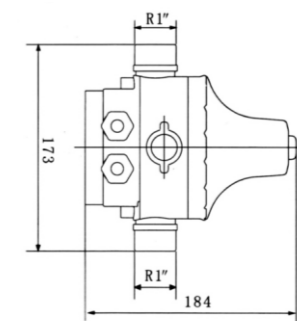
EPC-11



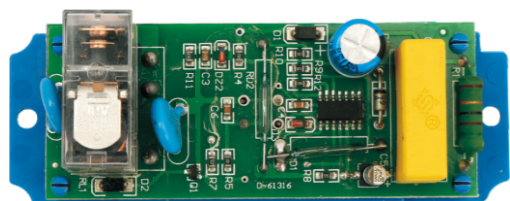
EPC-11

Technical Parameters

Singel voltage input	220V-240V 110V-120V
Frequency	50/60HZ
Max. current	10A
Max. power	1.1 KW, 1.5KW
Starting pressure setting	1.2bar, 1.5bar, 2.2bar
Max. working pressure	10bar
Connection thread	R1"
Protection rating	IP65
Flow at dry running	30-60L/h
Max. working temperature	60°C
Wiring requirement	Cable diameter 7.5-9mm
Approval	TUV Rheinland CE



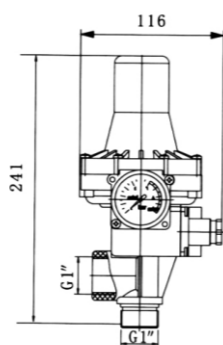
EPC-12



EPC-12

Technical Parameters

Singel voltage input	220V-240V 110V-120V
Frequency	50/60HZ
Max. current	10A
Max. power	1.1 KW, 1.5KW
Starting pressure setting	1.2bar, 1.5bar, 2.2bar
Max. working pressure	10bar
Connection thread	R1"
Protection rating	IP65
Flow at dry running	30-60L/h
Max. working temperature	60°C
Wiring requirement	Cable diameter 7.5-9mm
Approval	CE

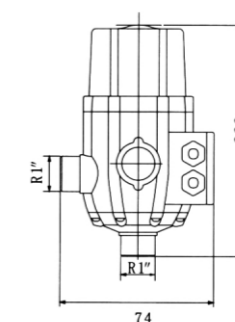


EPC-13

EPC-13

Technical Parameters

Dual voltage input	100V-240V
Singel voltage input	110V-120V 220V-240V
Frequency	50/60HZ
Max. current	10A
Max. power	1.1 KW, 1.5KW
Starting pressure setting	1.2bar, 1.5bar, 2.2bar
Max. working pressure	10bar
Connection thread	R1"
Protection rating	IP65
Flow at dry running	30-60L/h
Max. working temperature	60°C
Wiring requirement	Cable diameter 7.5-9mm
Approval	CE

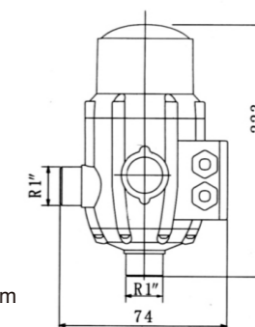


EPC-13A

EPC-13A

Technical Parameters

Dual voltage input	100V-240V
Singel voltage input	110V-120V 220V-240V
Frequency	50/60HZ
Max. current	10A
Max. power	1.1 KW, 1.5KW
Starting pressure setting	1.2bar, 1.5bar, 2.2bar
Max. working pressure	10bar
Connection thread	R1"
Protection rating	IP65
Flow at dry running	30-60L/h
Max. working temperature	60°C
Wiring requirement	Cable diameter 7.5-9mm
Approval	CE



Adjustable starting pressure 1.5-3bar



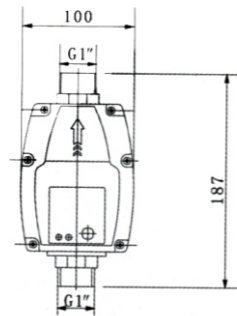
EPC-15



EPC-15

Technical Parameters

Dual voltage input	100V-230V
Singel voltage input	220V-240V
Frequency	50/60HZ
Max. current	12A
Max. power	1.1 KW
Max. working pressure	10bar
Connection thread	G1"
Protection rating	IP65
Flow at dry running	280-400L/h 60-160L/h
Max. working temperature	55°C
Wiring requirement	Cable diameter 7.5-9mm



Approval



FS-5

FS-5

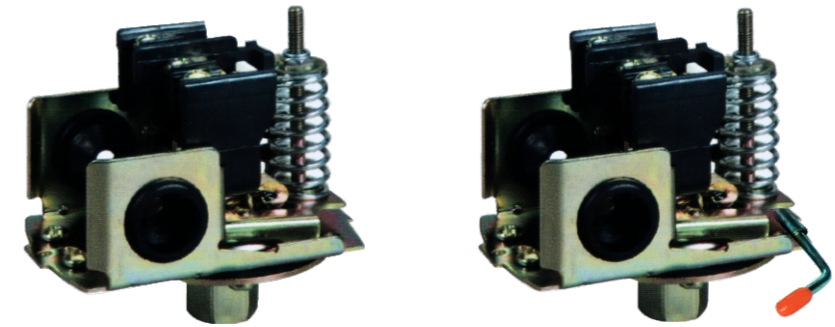
Rated Voltage	125V/250V AC
Frequency	50Hz/60Hz
Rated Current	10(4)/16(4)
Rated Power	125V/1/2HP 250V/3/4HP
Protection Grade	IP 68
Max. working temperature	55°C
Cable Specification	H05RN-F 3x0.75/3x1 (mm2) H07RN-F 3x1(mm)

Function **Emptying and filling, dual function**

Approval



MPS-2

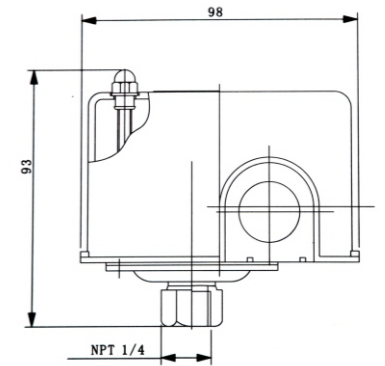


MPS-2

Technical parameters

Rated Voltage /Frequency	230V/50Hz 115V/60Hz
Rated Current /Power	12A/2HP 20A/1.5HP
Miu.cut-in	20PSI
Max.cut-out	100PSI
Inlet Base	Plastic, Metal
Pressure Range	20-40,30-50,40-60PSI

Approval



MPS - 9



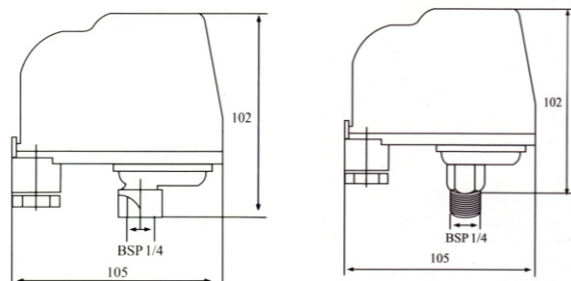
MPS-9

TECHNICAL DATA

1. Pressure Range: 20-60psi
2. Pressure Setting: 20-40psi, 30-50psi, 40-60psi
3. Rated Current 16(10)A
4. Rated Voltage: 11CA/-240V.380V
5. Frequency: 50/60Hz
6. Max Ambient Temperature: 50°C
7. Protection Degree: IP54

DESCRIPTIONS

1. pressure switch used in water system
2. The switch start and stop the water pump automatically according to the setting pressure value.
3. One phase or three phase



ACCESSORIES

Axial pressure gauge



PG-P50A



PG-I50A



PG-S50A

Radial pressure gauge



PG-I50R



PG-S60R



3-way connector



Copper check valve



5-way connector



Flexible hose